

MV: Mosvik

IMO: 8710998 /Callsign: V2PT9

DWAT: 2,992.6 Sdk/Box/Built: 1987

Flag: Antigua/Class: DNV GL

Mobile: +47 911 27182

Satellite +8 7077 315 78 70



GT 2236 / NT 1020 / LOA 82.30m / Beam 12.50m

DWCC – Summer 2,828mt (on 5.028m

DWCC – Draft) Winter 2,728mt

Bale / Grain 4,360m³ / 154,000 cbft

Timber Capacity abt 4,000m³ (Slings fully fitted)

1 Hold / 1 Hatch / 1 Moveable Bulkhead

Hold Dimensions L 52.15m x B 10.20m x H 8.20m

- Slightly narrowing fore

Hatch Type Macor piggy back

Hatch Dimensions / Hatches closed 52.15m X 10.20m

Container Capacity (TEU) 154

Rudder Becker Type / Bow Thruster Veth Jet 235kw
Depth Moulded 7.20m
Service Speed (knots) abt 10.5
Consumption Main Engine (Ltr/24hrs) with A/E abt 4,400ltrs
Port Consumption (tons/24hrs) 0.3tons
Main Engine Type / Output Wartsila / 1,360kw
Propeller CPP
Max permissible loading on Hatch Covers (t/m²) 1.53 tons
Max permissible loading on Tanktop (t/m²) 11.12 tons
- Tanktop strengthened for heavy cargo
Height of hatch coaming / hatches closed (m) 1.10m
Distance from Keel to top with Antenna 17.3m
Distance from Tanktop to Top of Hatch Coamings 6.34m
Mean draft of ship in heavy Ballast (FW) 3.24m
IMO fitted / ventilation – airchanges/hours 6
Water Ballast 1,486m³
Gasoil 232m³ / Freshwater 26m³

Bulkhead	Frame No	Cu.ft from aft
Pos 1	30	24.650
Pos 2	40	77.472
Pos 3	68	91.558
Pos 4	88	109.165
Pos 5	100	123.251
Pos 6	110	153.879



SHIP DETAILS – All details about and without guarantee

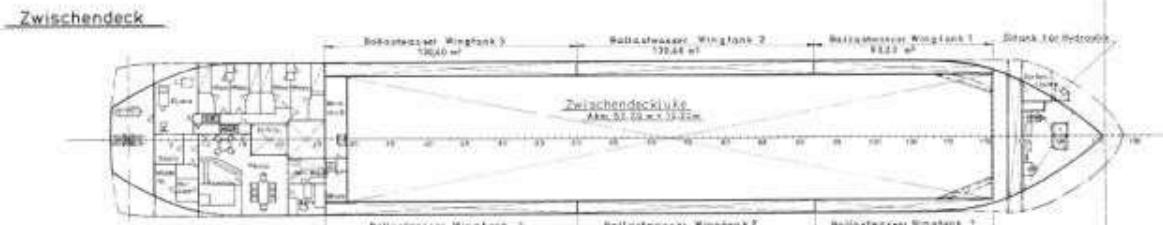
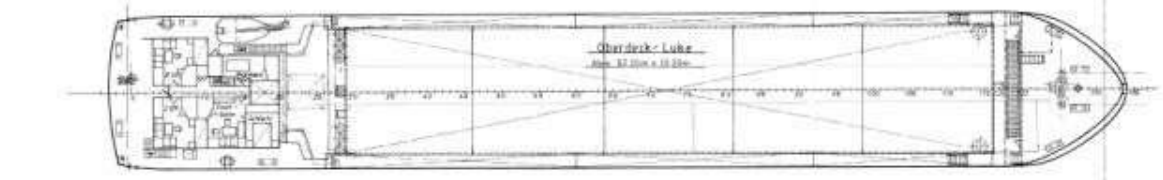
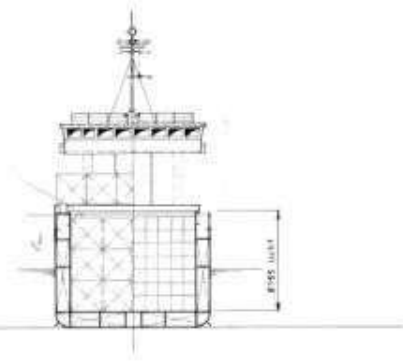
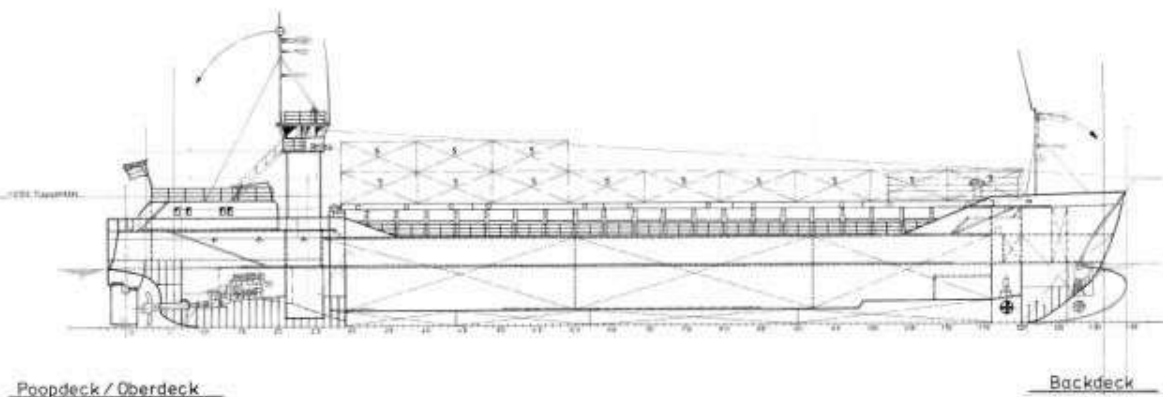
Norvik Shipping Ltd – Charmans Farm – Beggars Lane – Westerham – United Kingdom Kent TN16 1QP

Email: john@norvikshipping.co.uk Telephone: +44 (0) 1959 562181 Fax: +44 (0) 1959 564133

John Phillips M: ++44 (0) 7768 725 792

MV: Mosvik General Plan

IMO 8710998 -Callsign V2PT9 -1987 -Antigua –DNV GL -DWAT 2,992.6 -Sdk/Box



Hauptabmessungen

Länge über alles	ca	22,25m
Länge zw. den Loten		18,90 m
Breite auf Spanten		32,50 m
Seitenhöhe Oberdeck		3,10 m
Seitenhöhe Zwischendeck		5,019 m
Frachthöhe (5immer)		4,884 m
Trachfähigkeit	+ 2%	2851 tDW
Vermessung	London-Regel	NRZ 956 BRZ 2236
	Displ.-Regel	999 BRZ
Fixpunktöhe über Basis		10,70 m
Laderraumhöhe		
Schüttgutvolumen	4344,68 m ³	103,421 cbf
Stückgutvolumen	4343,29 m ³	153,381 cbf
Containerkapazität (22'x8'x8')		
unter Deck		33 TEU
auf der Luke		58 TEU
Gesamt		157 TEU
Maschine	Wärtsilä/Wichmann Dieselmotor Type 4 L 2 B	
Nennleistung	1200 kW (1632 PSel bei 800 1/min)	
Projektfortschwindigkeit (bei 1000 kW)	ca	11,0 kn
Besatzung		1 Mann
Klasse	DL = 100 A & E 2 B "Verstärkt für Schwerlasttransport"	
	"Eingerichtet für Tanktransport" = M.C.E.2.AUT.	

Generalplan 630 83/183 a		1.200 83/183 a
Schiffwerft Hugo Peters Wismar Peters & Co. GmbH	Projekt-Entwurf Wismar PIA	No. 7